

TICKS

Prevention

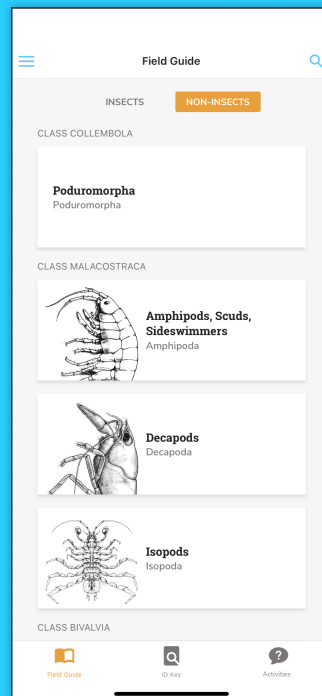
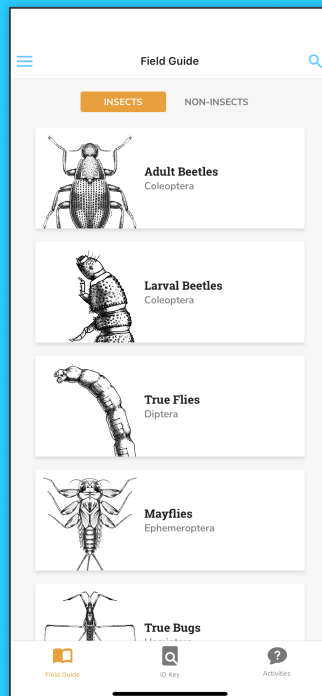
01 — FIELD GUIDE

Explore our zoomable collection of 150 common freshwater macroinvertebrates found in Eastern North America.

[HOME PAGE](#)

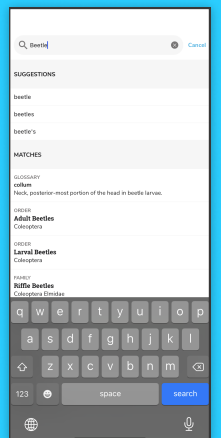
Tap on the **Hamburger Menu** to find additional information and features

See **Insect Orders** organized alphabetically by scientific name



- Tap on **Search** to quickly browse the Field Guide

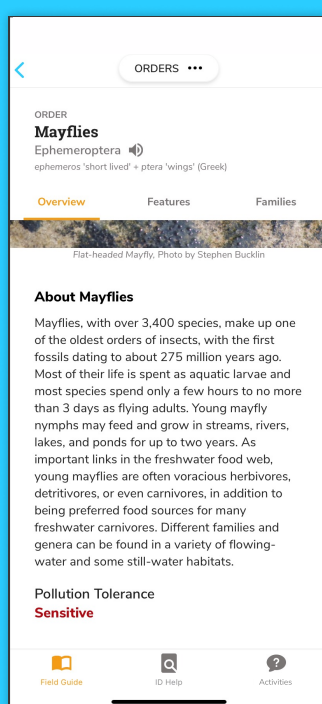
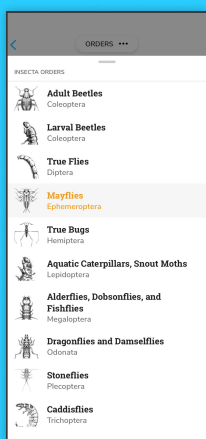
Switch between **Insects** and **Non-Insects** Tabs



ORDER LEVEL PAGES

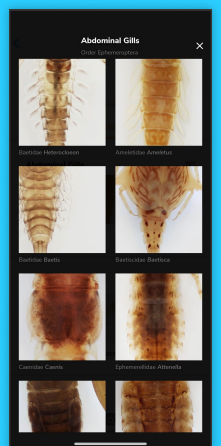
Move easily
between Orders
with the **Top Tab**

See an **Overview**
along with details like
Pollution Tolerance



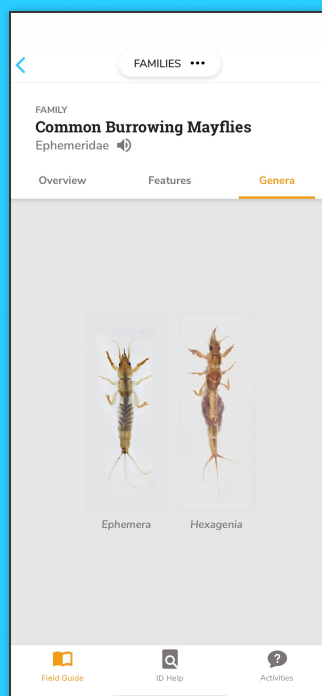
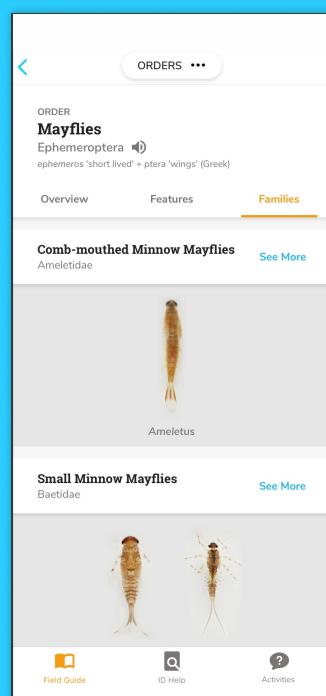
Scroll to find **Annotated Illustrations**
- for the Orders as well as examples
and definitions of **Key Features**

- Tap the **Gallery** icon for more images of features



FAMILY & GENUS LEVEL PAGES

Dig deeper into the **Families** on the 'Orders Page' and **Genera** on the 'Families Page'



Pinch to **Zoom In**
on a specimen



Switch between Different Views



Scan to
Download
PocketMacros

02 — IDENTIFICATION KEY

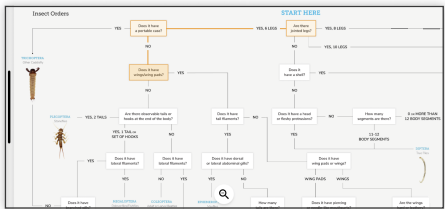
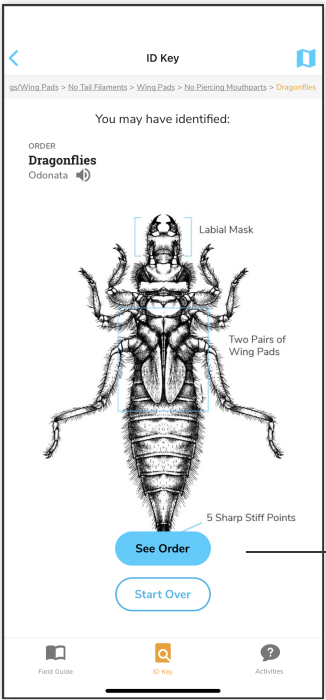
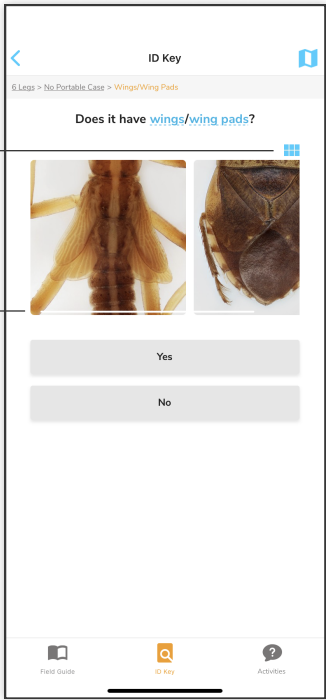
Step through questions to help identify unknown insects by comparing their body parts with images in our collection.

ID QUESTIONS & RESULTS

Tap on the **Breadcrumb Navigation** to jump to previous questions

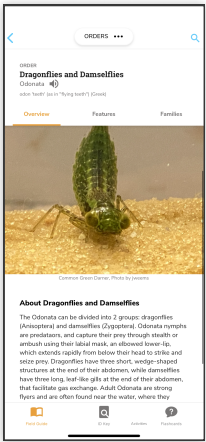


Use the **Scroll Bar** on the photos or tap on the **Gallery** icon to view more examples



Tap on the **Flat Key** icon to see your progress in another view

See more about your ID on the **Order Page**

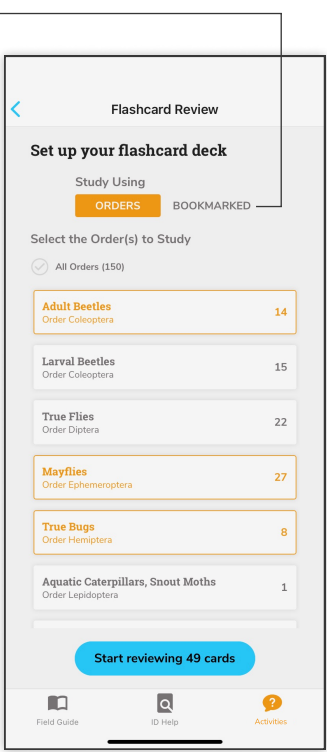


03 — ACTIVITIES

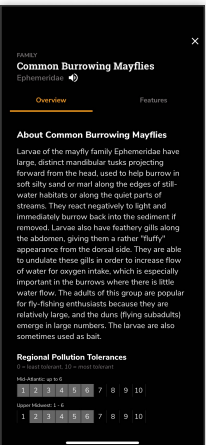
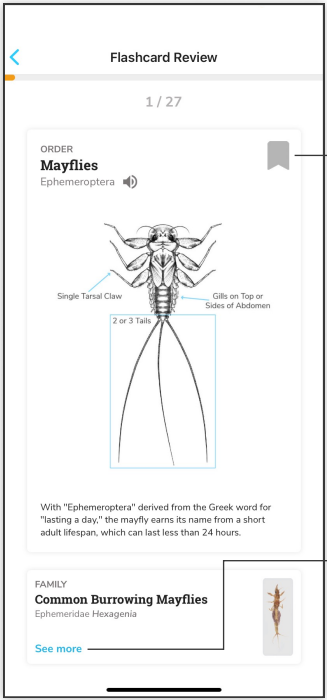
Review various flashcard decks and practice activities to identify common freshwater macroinvertebrates like a pro.

Study specific cards later in the **Bookmarked** tab section

Create a **Flashcard Deck** by selecting Orders you want to practice on



FLASHCARD SETUP & REVIEW

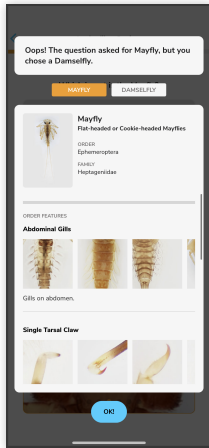


Tap the **Bookmark** icon to study it later

Tap **See More** to find more details on the family level

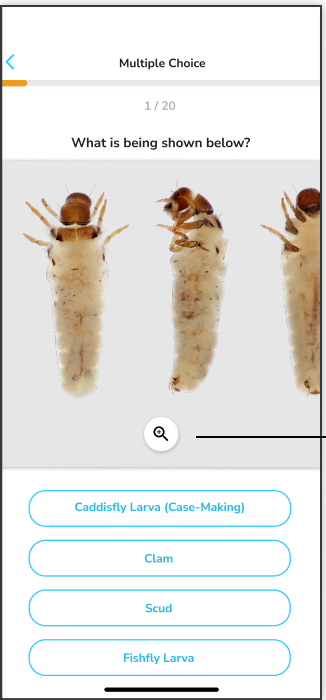
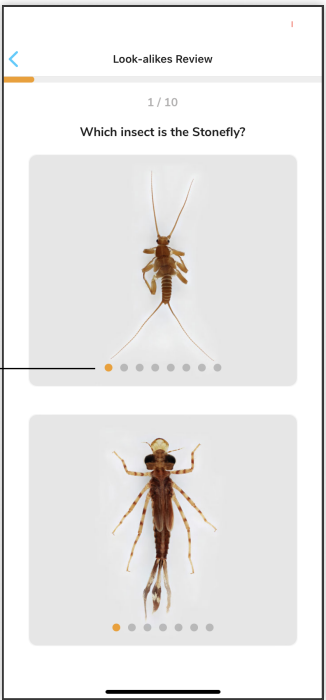
Tap the **Magnifying Glass** to zoom in

Swipe to see different **Key Diagnostic Features**



View the **Modal Popup** to see the correct answer

LOOK-ALIKES & MULTIPLE CHOICE PRACTICE



Use the **Horizontal Scroll** on to see different views

Tap the **Magnifying Glass** to zoom in



Scan to
Download
PocketMacros